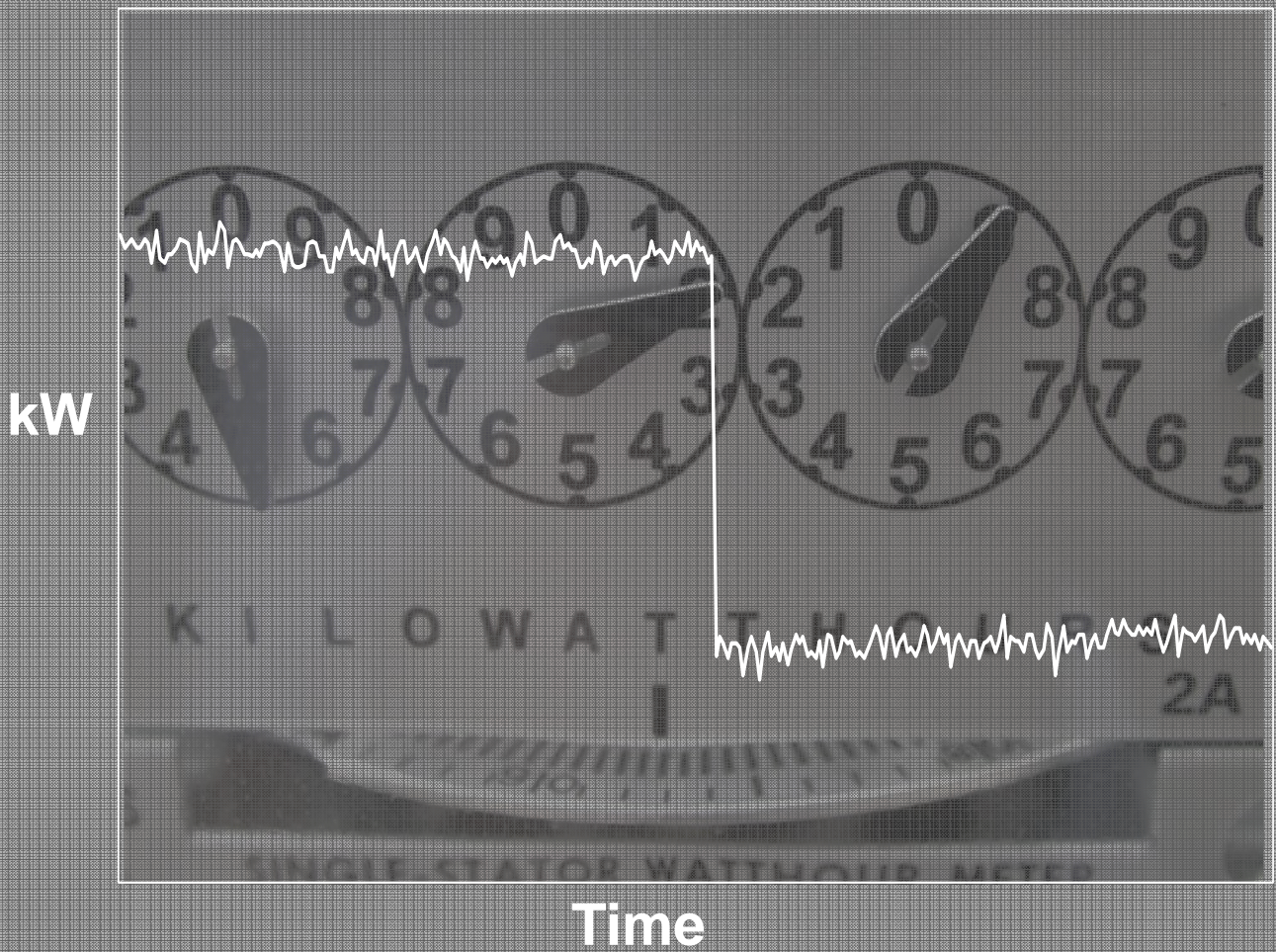


Energy
Conservation
Industries, LLC



energy conservation for a new generation™

www.energyconservationindustries.com

OVERVIEW

PROBLEM

According to DOE nearly **50%** of all electric motors currently in use operate at less than **40%** of full load capacity. This unnecessary excess and inefficiency means **WASTED MONEY & WASTED ENERGY** - both of which are financially and socially unaffordable in light of today's world of rising energy costs and emerging environmental issues.

CHALLENGE

Electric motors are responsible for **50—70%** of the total electricity consumed in most commercial and industrial facilities and account for over **60%** of all electricity consumed in the US. Furthermore DOE reports a **22%** increase in electricity costs in all sectors over the past 10 years. Every business looks for ways to reduce costs, but in order to keep pace with the current energy and environmental trends facilities whose core business relies on electric motors must include an **Energy Conservation** program as part of its overall business plan.

SOLUTION

ENERGY CONSERVATION INDUSTRIES (ECI) offers a financially and environmentally responsible solution. Implementation of this proprietary method for **Energy Conservation** in electric induction motors provides a cost savings and energy conservation project that will create an immediate reduction to bottom line operating costs as well as instantly supply a reduction in the carbon footprint of each treated motor.

METHOD

The **ECI** Method is a customized, after-market retrofit specifically designed to passively reduce the naturally occurring electrical losses in induction motors. Motors that are under-loaded or over-sized have more electrical losses and therefore more potential for **Energy Conservation** (in kW) and dollar savings.

RESULTS

Energy Conservation generally ranges between 5 –40% per application (or about 1.3kW) and will always be dependent upon the motor load.

BENEFITS

Once applied this patented and proven system yields paybacks ranging from 6—40 months depending on average annual utility rates and hours of operation. Furthermore, for every 1.5kW in **Energy Conservation** garnered by the **ECI** Method nearly 1 ton of CO₂ is reduced from the atmosphere.

DIFFERENCE

- Patent Pending
- Proven with Measurable Results
- Provides Immediate Impact
- Safe (Passive System/UL508A)
- Carbon Angel Affiliate

BONUS

Through an exclusive affiliation with Carbon Angel (a Platinum ecohonest company) **ECI** is now able to offer certified carbon offsets and financial support for its **Energy Conservation** projects. Find out more about Carbon Angel and what you can do to participate and support **ECI** and other carbon output reducing projects by visiting **www.carbonangel.org**



APPLICATIONS

COMMERCIAL APPLICATIONS

Retail Centers/Warehouses

<u>APPLICATION TYPE</u>	<u>SAVINGS</u>
Air Conditioning Compressors	5—20%
Condensers & Compressors	5—15%
Pumps	5—20%
Blowers & Fans	10—25%
Conveyors	10—30%
Elevators & Escalators	20—40%

Office Buildings

<u>APPLICATION TYPE</u>	<u>SAVINGS</u>
Air Conditioning Compressors	5—20%
Pumps	5—20%
Blowers & Fans	10—25%
Elevators & Escalators	20—40%

Churches & Schools

<u>APPLICATION TYPE</u>	<u>SAVINGS</u>
Air Conditioning Compressors	5—20%
Pumps	5—20%
Blowers & Fans	10—25%
Elevators	20—40%

INDUSTRIAL APPLICATIONS

Warehouse/Distribution Centers

<u>APPLICATION TYPE</u>	<u>SAVINGS</u>
Air Conditioning Compressors	5—20%
Condensers & Compressors	5—15%
Pumps	5—15%
Blowers & Fans	10—25%
Conveyors	10—30%

Manufacturing/Process Facilities

<u>APPLICATION TYPE</u>	<u>SAVINGS</u>
Compressors	5—25%
Pumps	5—15%
Blowers & Fans	10—25%
Conveyors	10—30%
Grinders	5—20%
Compactors	10—25%
Agitators	5—20%
Saws	10—35%

Petroleum

<u>APPLICATION TYPE</u>	<u>SAVINGS</u>
Pumping Units	5—35%
Pumps	5—20%
Compressors	5—25%



PROJECT IMPLEMENTATION

1: MOTOR LIST

Provided by: Customer

Motor List Including HP, Average Annual Hours of Operation, Average Annual Utility Rate



2: FACILITY ASSESSMENT

Provided by: *ECI*

Facility Assessment Visit and Electrical Motor Energy Audit (Based on Motor List)



3: PROPOSAL

Provided by: *ECI*

Proposal Including Projections for Energy Conservation, Dollar Savings, Project Cost, Payback



4: PURCHASE ORDER

Provided by: Customer

Purchase Order and Project Deposit



5: MANUFACTURING & DELIVERY

Provided by: *ECI*

Manufacturing and Delivery of Required Equipment



6: INSTALLATION

Provided by: Customer

Installation via Electrical Contractors



7: ENERGY CONSERVATION & DOLLAR SAVINGS

**Energy
Conservation
Industries, LLC**
energy conservation for a new generation™

1042 Garner Field Road Uvalde, TX 78801 USA

Phone: 830.278.6100 Fax: 830.278.3165

e-mail: info@e-conindustries.com

www.energyconservationindustries.com